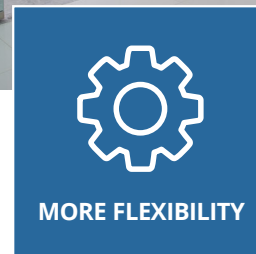
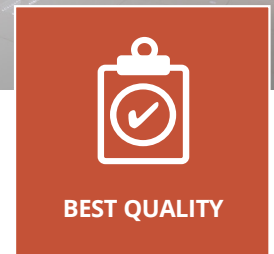


# CX-95S-DH Magnetic Door Holder



MORE FLEXIBILITY



BEST QUALITY

Camden CX-95S-DH Magnetic Door Holder is designed for virtually any remote door release application. The UL-listed Magnetic Door Holder controls the release and closing of commercial and public area doors, ideal for use in apartment buildings, schools, hotels, hospitals, and offices.

Fail-safe operation, tri-volt coils, and an adjustable armature plate allow for easy and flexible installation. Camden Magnetic Door Holders may be surface or flush mounted (CX-95S-DH), or floor mounted (CX-95S-DH-FL), with all mounting hardware included in the kit. Optional extension bars are also available.

## Features

- Multiple voltages: 12/24V, AC/DC, 120 VAC
- Armature plate adjusts to door alignment
- **CX-95S-DH:** Surface or flush mount model
- **CX-95S-DH-FL:** Floor mount model
- Up to 35 lbs (16 kg) holding force
- Used for door release in public, industrial and commercial applications
- 3" & 7" extension bars available
- 2 year warranty



## SPECIFICATIONS

VOLTAGE:	12/24V AC/DC, 120V AC
CURRENT DRAW:	55mA @ 12V AC 57mA @ 12V DC, 32mA @ 24V AC 34mA @ 24V DC, 30mA @ 120V AC
STATIC HOLD FORCE:	<b>12V AC/DC:</b> Up to 30 lbs. <b>24V AC/DC:</b> Up to 35 lbs. <b>120V AC:</b> Up to 18 lbs.
MOUNT OPTIONS:	Surface or Flush Mount
DIMENSIONS:	<b>Surface Mount Magnet:</b> 2-3/4" W x 4-5/8" L x 2-1/2" D (70mm x 116mm x 62 mm) <b>Flush Mount Magnet:</b> 2-3/4" W x 4-5/8" L x 1-3/4" D (70mm x 116mm x 44mm) <b>Armature Plate:</b> 2-9/16" W x 2-9/16" L x 2-7/8" D (65mm x 65mm x 74mm) <b>L Bracket:</b> 4-1/2" W x 3-9/16" L x 1-3/4" D (114mm x 90mm x 44mm)

## ORDERING INFORMATION

### MODEL

**CX-95S-DH** Magnetic Door Holder Surface/Flush Mount

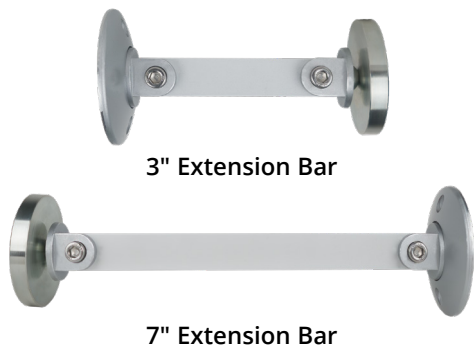
**CX-95S-DH-FL** Magnetic Door Holder Floor Mount

### EXTENSION BARS

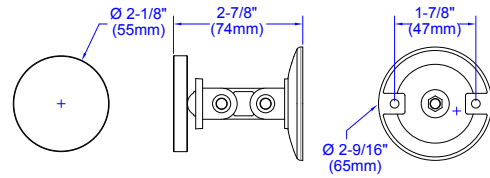
**CX-95S-3E** 3" Magnetic Door Holder Extension Bar

**CX-95S-7E** 7" Magnetic Door Holder Extension Bar

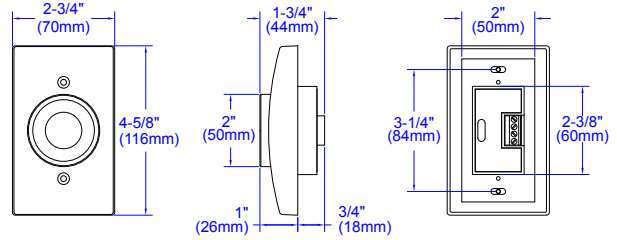
## EXTENSION BARS (Shown with Mounting and Armature Plates)



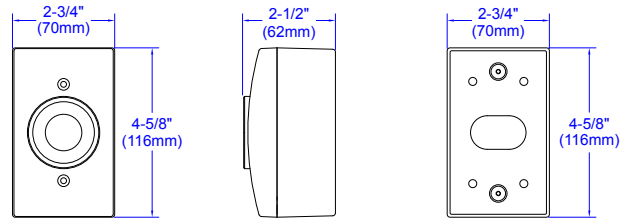
## DIMENSIONS



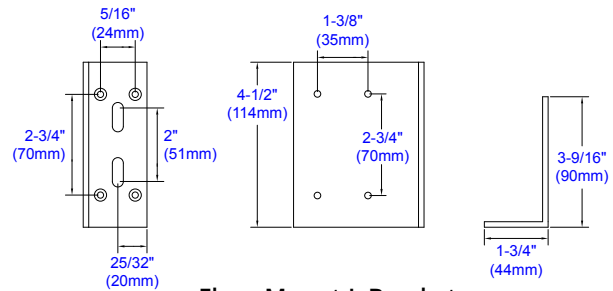
**Armature Plate**



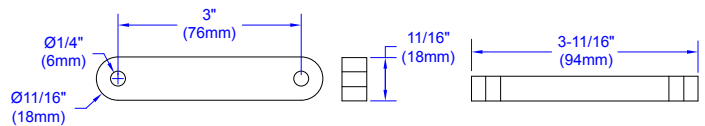
**Flush Mount**



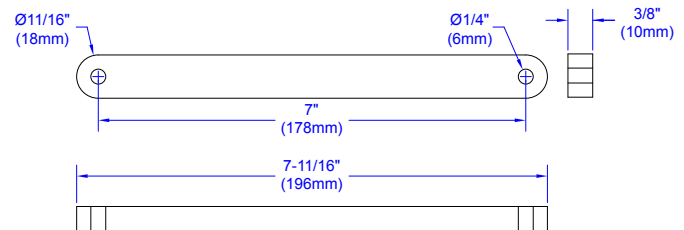
**Surface Mount**



**Floor Mount L Bracket**



**3" Extension Bar**



**7" Extension Bar**



Opening New Doors to Innovation, Quality, and Support!

2395 Skymark Ave, Mississauga, ON Canada L4W 4Y6 • Toll Free: 1(877) 226-3369 (CAMDEN9)  
Tel: (905) 366-3377 | Fax: (905) 366-3378 | E-mail: info@camdencontrols.com | www.camdencontrols.com



Part #: MKTG-LIT-SP-CX-95S-DH  
Rev: 1 | Date: Jan. 8, 2025