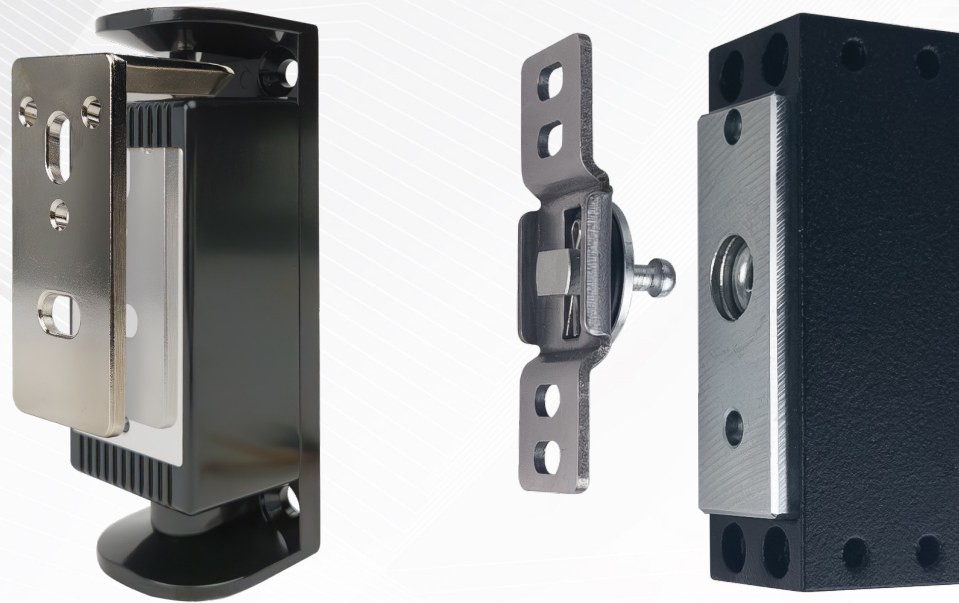


# SECURE YOUR INVENTORY WITH CAMDEN'S ELECTRIC CABINET LOCKS

The Ultimate Solution for Preventing Theft From Cabinets,  
Refrigerator Doors or Display Cases

June 2024



LOCKING | CONTROL | ACTIVATION | ACCESS



# Camden Door Controls



Our unwavering commitment to product innovation, quality, and customer support has made Camden Door Controls one of the most rapidly growing manufacturers in the industry and your best choice for door activation, control, locking, and access products!

Our successful move to a new 41,000 sq. ft. head office and manufacturing facility (that more than doubles our available floor space) is enabling Camden to keep pace with higher production volumes, while improving our ability to process more than 90% of stock orders within two business days.

Although Camden continues to grow in size and expand our range of products and services, there will always be one thing that will never change – our dedication to earn your business every day!



**BEST QUALITY**



**EXCLUSIVE PRODUCTS**



**FASTEST DELIVERY**

# Camden Products

Camden manufactures all the product components to satisfy applications to control various cabinet doors such as:

- Refrigerator doors used in convenience stores
- Pharmaceutical cabinets in dispensaries and pharmacies
- Display cases used in jewellery stores

Control Cabinet with Power Supply



CS-CTN Custom Console Series



CX-EPD0009  
Electric Cabinet Lock



CX-EP0010  
Electric Cabinet Lock



CM-AF140SO  
Corridor Dome Light

*Used to confirm if the door is opened and/or unlocked*

# Cabinet Locks

## Overview

**Camden cabinet locks provide versatile security for:**

- Drawers
- Refrigerator doors
- Display cases
- Lockers
- Cabinets





Their compact design allows for internal mounting, ensuring they remain discreet and ideal for fixtures where aesthetics matter.

The following slides will showcase the two new cabinet locks introduced to the market to solve current application needs.



**Camden's CX-EPD009 on Refrigerator  
in Convenience Store**

# Cabinet Locks – Camden Advantage

Manufacturer	Camden	Camden	Assa Abloy/HES	Assa Abloy/HES	Allegion/Schlage	DormaKaba	DormaKaba
Photo							
Model	CX-EPD0009	CX-ED0010	610	660	442S	3510LM	3513/3513DM
Holding Force	440	440	200	1,000	600	250	440
Fail Safe	Yes	Yes	Yes	No	No	Yes	Yes
Fail Secure	No	Yes	Yes	Yes	Yes	Yes	Yes
Preload (lbs.)	5	0	0	15	0	0	0
Swing Doors	Yes	Yes	Yes	Yes	Yes	Yes	Yes
Sliding Doors	Yes	Yes	Yes	Yes	-		Yes
Drawers	Yes	Yes	Yes	Yes	-	Yes	
Power	12/24	12/24	12/24	12/24	12/24	12/24	12/24
Current @ 12 (DC) mA	60 mA	280 mA	260 mA	240 (700 with preload option)	500 mA	250 mA	200 mA
Current @ 24 (DC) mA	110 mA	140 mA	130 mA	120 (350 with preload option)	250 mA	120 mA	100 mA
Latch Monitoring	Plate	Yes	Yes	Yes	No	Yes	Yes
Door Position Monitoring	No	Yes	No	No	No	No	Yes
Mechanical Key Over-ride	No	No	No	Yes	No	No	No
Six Foot Cable	Yes	Yes	No	Yes	No	No	No
Dimensions	2 1/2"x 27/32"x 1 1/4" (64mm x 21.5mm x 32mm)	[lock body] 3 5/16"x 1 3/16" x 1 1/8" (84mm x 30mm x 28mm)  [Strike plate] 2 1/19"x 15/16"x 1 1/4" (52x24x32mm)	1.65" x 1.9"x 0.8" (42mm x 48mm x 20mm)	2 5/16" x 3 3/8" x 15/16" (58mm x 85mm x 23mm)	1"x 1" x 2 3/4" (25.4mm x 25.4mm x 70mm)	1 5/8"x 1 7/8" x 13/16" (42mm x 48mm x 20mm)	[3513] 1 3/16"x 2 7/8"x 1 1/8" (30mm x 73mm x 29mm) [3513DM] 1 3/16"x 3 11/16"x 1 1/4" (30x94x32mm)
Temperature	-4°F to 140 °F (-20°C to 60 °C)	-4 °F to 140 °F (-20°C to 60°C)	50 °F to 104 °F (10 °C to 40 °C)	122 °F (50 °C) to 32 °F (0 °C)	None provided	None Provided	14°F to 104°F (-10°C to 40°C)

# Cabinet Locks – Use Cases

## Applications

- **Refrigerated Alcohol Beverages:**  
Some convenience store operators are experiencing thefts twice or significantly more per day
- Jewelry display cases locks prevent theft and unauthorized handling
- Pharmaceutical dispensaries require lock control of refrigerator doors and cabinets



# Cabinet Locks - Solutions

## Overview

### Theft:

Currently convenience stores selling alcoholic beverages encounter thefts from two to 20 times a day.

### Restrict Access:

Dispensaries need a small, but durable lock to control their inventory and surrender an audit report when requested.

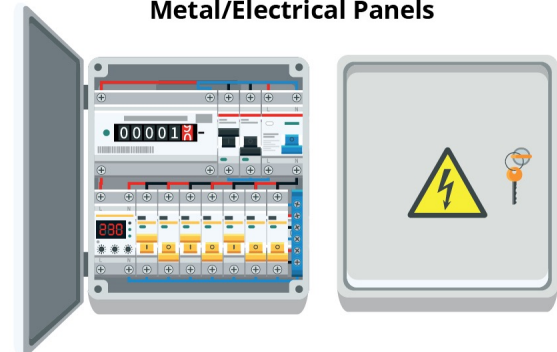
Remotely control access to display cases or cabinets storing high value items.

An electric lock can be wired to a third - party system such as an access control controller or an authorized age authenticator system for alcoholic beverages.

Cabinet & Drawer Security



Metal/Electrical Panels



Display Cases



# Camden Suite of Products

## CX-EPD0009 Magnetic Cabinet Lock

A fail-safe lock with an extremely high holding force and endurance.

- Front or side mounting for use with swing or sliding doors and drawers
- Armature plate adjusts to door alignment
- Water resistant for indoor and outdoor use
- 440 lbs (200 kg) holding force
- 5 lbs (2.3 kg) preload
- Optional glass door mounting kit available



L & Z Brackets



## CX-ED0010 Electromechanical Cabinet Lock

A lock that can be field selected for fail-safe or fail-secure with both lock and door position monitoring.

- Front or side mounting for use with swing or sliding doors and drawers
- 440 lbs. (200 kg) holding force



# Camden Suite of Products

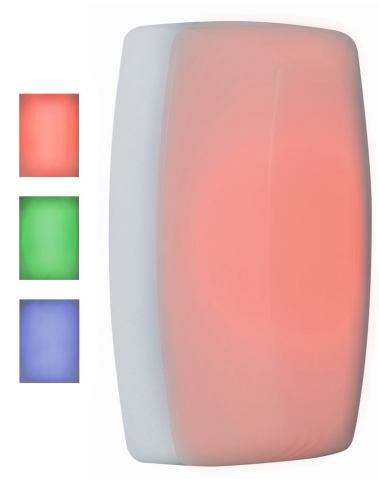
## CS-CTN Custom Console Cabinets

- Console with 10° angle of inclination to clearly read each button and status
- Rubber feet provided
- Available to accommodate any system capacity from 4 to 25 doors
- Durable silver anodized aluminum



## CM-140SO Corridor Dome Light

- Three distinct colors can be emitted, Red, Green or Blue
- Compact and elegant design can be seen from any angle
- Continuous or Flashing illumination
- Impact resistant polycarbonate
- Weather resistant, rubber gasket included
- Adjustable 93dB sounder
- Super bright LEDs for high visibility even in daylight



# Cabinet Locks – Camden Advantage

- Commercial grade devices designed to meet industry regulatory standards
- Professional application services
- Single source for all door hardware
- Low current with high holding force optimizes system power requirements
- Free technical support
- Intuitive system design requires virtually no training  
(push button to unlock, RED = door open, Green = door unlocked)
- No IT infrastructure required thus no monthly subscription services
- Design easily installs for pre-existing cabinets and doors due to its small size and scalable console

# Cabinet Locks – Use Case

## Refrigerated Alcoholic Beverages

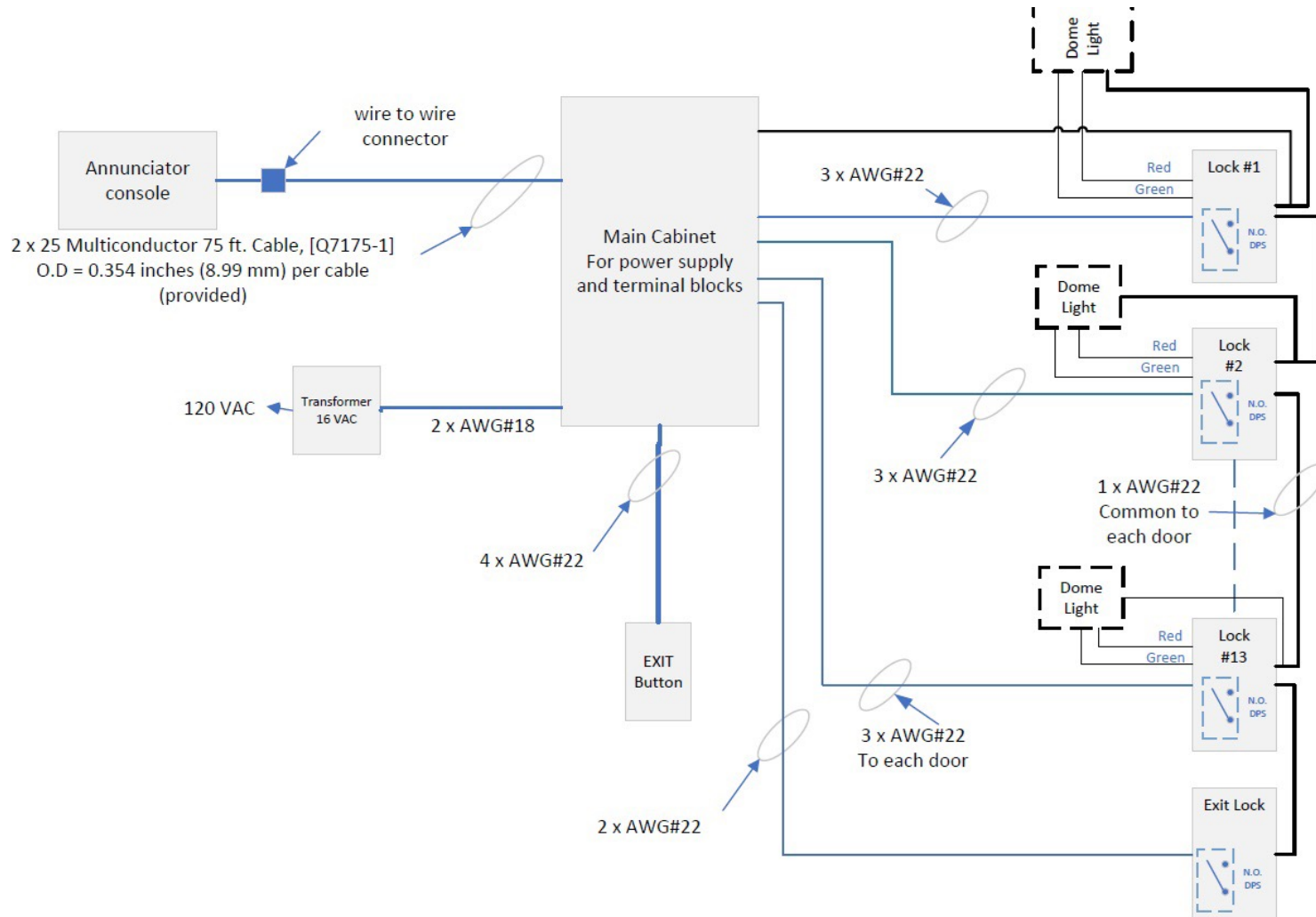
A chain of convenience stores needed a cost-effective, unobtrusive solution to prevent daily thefts from refrigerated beverage displays. Camden provided a system design, and the dealer installed the following items.

- 13 CX-EPD0009 status Cabinet locks on refrigerators
- Central control cabinet and power supply (75 feet from cashier)
- CS-CTN Desktop control console with 13 illuminated pushbuttons and a sounder
- CM-AF140SO Corridor dome light for visual door



# Custom Consoles

## Refrigerator Door Control System Diagram



**THANK YOU**

