

## CX-EL 90 SERIES

### BATTERY POWERED PROXIMITY LOCKS



CX-EL 90 SERIES

#### FEATURES

- UP TO 1" READING RANGE (25MM)
- 50 USERS PER LOCK
- EASY TO INSTALL AND PROGRAM, NO PC REQUIRED
- MINIMUM 30,000 OPENINGS PER BATTERY LIFE (LITHIUM BATTERY, INCLUDED)
- LOW BATTERY AUDIBLE WARNING
- FAIL UNLOCKED.  
FAIL LOCKED (SPECIAL ORDER)
- AUDIBLE SIGNAL UPON CARD PRESENTATION
- (3) LOCK PIN OPTIONS, TO SUPPORT ANY INSTALLATION
- CX-EL9015 (MAIN) BATTERY OPERATED PROX. CABINET LOCK CAN BE ORDERED WITH ALARM, GROUP OR LOCKER OPERATING MODES
- CX-EL9015S (EXPANSION) BATTERY OPERATED CABINET LOCK, UNLOCKED BY MASTER (CX-EL9015) LOCK
- CX-EL9017SL (EXPANSION), METAL CABINET LOCK, POWERED/UNLOCKED BY MASTER (CX-EL9015) OR EXPANSION LOCK CX-EL9015S

#### DESCRIPTION

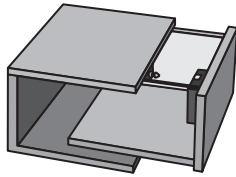
**CX-EL 90 Series** proximity cabinet locks provide an affordable and flexible solution, whether the installation requires one secure cabinet/drawer or many. CX-EL9015 locks have a built-in proximity card/FOB reader with 30,000 operation battery life. They are easily installed as single, multi lock (group mode) and as multiple locks with individual access (locker mode). Innovative front and side locking, with a range of lock pin options, enable master and slave locks to be used on sliding doors (glass or wood), hinged doors (glass or wood) and drawers (front, rear or bottom).

#### APPLICATION

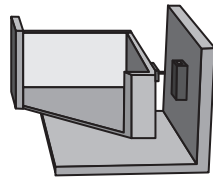
CX-EL90 Series proximity cabinet locks are designed for residential, commercial, retail and industrial applications requiring secure storage or display of valuables (such as jewelry, collectables), dangerous goods (such as fire arms or chemicals), pharmaceuticals (such as drug dispensaries or drug cabinets) or restricted access to documents or equipment (such as financial data, computer servers, keys), Self-contained, battery powered design make these locks also ideal for securing portable cabinets/equipment, such as those found in healthcare and gaming facilities.

APPLICATIONS - INSTALLATION

DRAWER APPLICATION

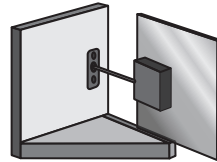


**Front Face Mount**  
Installs using Standard Locking Pin.

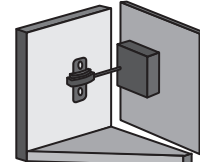


**Back of Drawer**  
Installs using Locking Pin with Alarm function. Requires external reader.

SLIDING & SWING DOOR APPLICATION



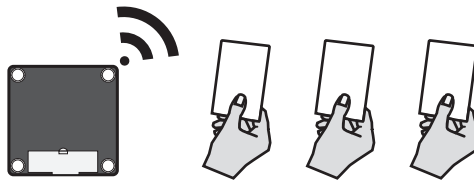
**Sliding Door**  
Installs using Locking Pin with Alarm function and Glass Mounting Kit.



**Swing Door Mount**  
Installs using Standard Locking Pin.

APPLICATIONS - CONFIGURATIONS

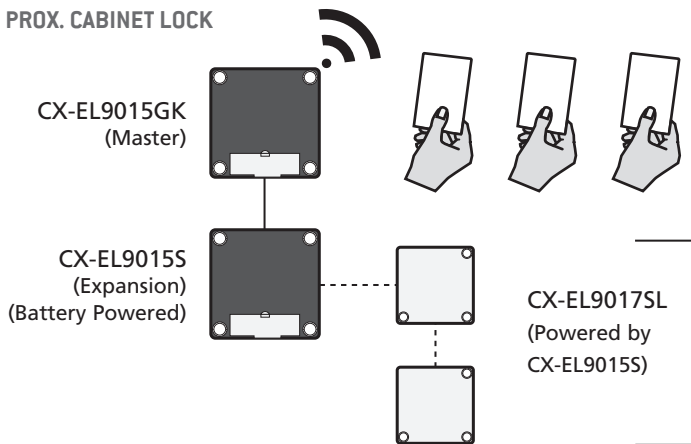
SINGLE PROX. CABINET LOCK



Up to 50 Users

Order CX-EL9015AK for lock with alarm  
Order CX-EL9015GK for non-alarm

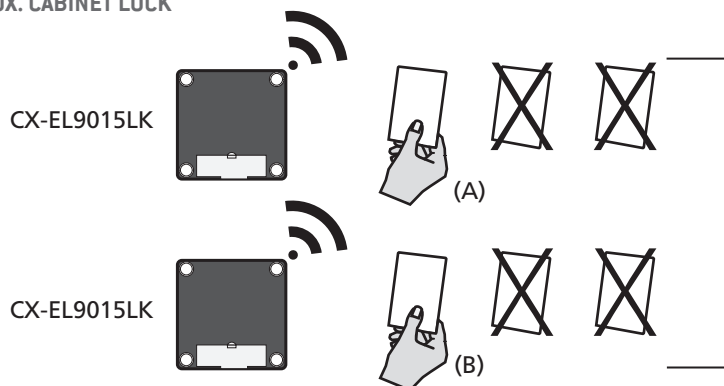
MULTIPLE PROX. CABINET LOCK



Up to 50 Users

Expansion Locks open when master activated

'LOCKER' PROX. CABINET LOCK



Only 1 user/card able to open each locker

# CX-EL 90 SERIES

## SPECIFICATIONS

<b>HOLDING FORCE:</b>	55 LBS. (25 KG.) - 220 LBS. (100 KG.), DEPENDANT ON LOCKING PIN
<b>READER FORMAT:</b>	PROPRIETARY PROXIMITY
<b>RANGE:</b>	PROX LOCK: UP TO 3/4" (20MM)
<b>EXTERNAL READER:</b>	UP TO 1" (25MM)
<b>BATTERY:</b>	3 V LITHIUM (INCLUDED)
<b>BATTERY LIFE:</b>	30,000 OPERATIONS
<b>USERS:</b>	UP TO 50 PER LOCK
<b>SECURITY:</b>	FAIL SAFE (UNLOCKED) DEFAULT, FAIL SECURE (LOCKED) ON SPECIAL ORDER
<b>AUDIBLE ALERT:</b>	LOW BATTERY
<b>TEMP RANGE:</b>	14F (-10°C) TO 140F (+60°C)
<b>DIMENSIONS:</b>	<b>CX-EL9015A/G/L/S:</b> 2 3/8"H x 2 3/8"W x 7/8"D (60mm x 60mm x 22mm) <b>CX-EL9017SL:</b> 1 9/16"H x 1 9/16"W x 1/2"D (40mm x 40mm x 12mm)

## ORDERING INFORMATION

MODEL	DESCRIPTION
<b>PROX. CABINET LOCK KITS</b>	
CX-EL9015AK	CX-EL9015A BATTERY POWERED LOCK (ALARM MODE), 3V LITHIUM BATTERY, (2) CX-EL9030 PROX. ACCESS CARDS, 1 PROX. PROGRAM CARD
CX-EL9015GK	CX-EL9015B BATTERY POWERED LOCK (GROUP MODE), 3V LITHIUM BATTERY, (2) CX-EL9030 PROX. ACCESS CARDS, 1 PROX. PROGRAM CARD
CX-EL9015LK	CX-EL9015G BATTERY POWERED LOCK (LOCKER MODE), 3V LITHIUM BATTERY, (2) CX-EL9030 PROX. ACCESS CARDS, 1 PROX. PROGRAM CARD
<b>EXPANSION CABINET LOCKS</b>	
CX-EL9015S	BATTERY POWERED EXPANSION CABINET LOCK, 3V LITHIUM BATTERY
CX-EL9017SL	EXPANSION CABINET LOCK, POWERED BY MASTER LOCK
<b>LOCKING PINS</b>	
CX-EL9068	FRONTAL LOCK PIN, 77 LBS. (35 KG.) RATED BREAK POINT
CX-EL9069	HIGH STRENGTH 90° LOCK PIN WITH SPRING PLUNGER, 77 LBS. (35 KG.) RATED BREAK POINT
CX-EL9070	MINI LOCK PIN
<b>CARDS/TAGS</b>	
CX-EL9010	PROGRAM CARD
CX-EL9020	PROXIMITY ACCESS CONTROL KEY TAG, PACKAGE OF 10
CX-EL9030	PROXIMITY ACCESS CONTROL CARD, PACKAGE OF 10
<b>ACCESSORIES</b>	
CX-EL9052S2	CABINET LOCK NETWORK CABLE 8FT. (2.5M)
CX-EL9051S	PLUG IN POWER SUPPLY, 120 VAC
CX-EL9040	EXTERNAL CARD READER
CX-EL9060	GLASS DOOR MOUNTING KIT
<b>COMPACT CABINET LOCK</b>	
CX-EL9117	LINE POWER ELECTRONIC CABINET LOCK CONTROLLED BY (SEPARATE) KEYPAD OR ACCESS CONTROL SYSTEM



CX-EL9015AK/GK/LK/S



CX-EL9017SL



CX-EL9068



CX-EL9069



CX-EL9020



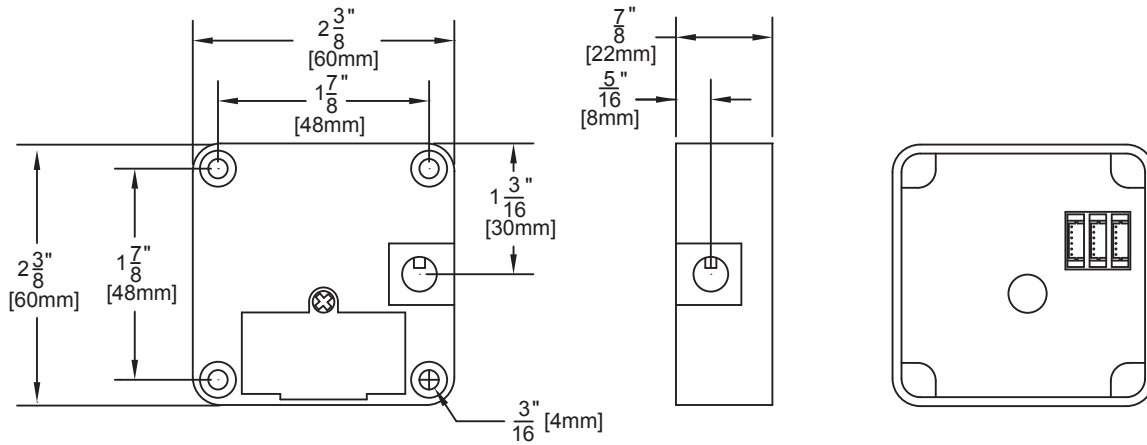
CX-EL9070



CX-EL9040

DIMENSIONS

CX-EL9015B



CX-EL9017S

